



Sohag University

“Facts and Numbers”

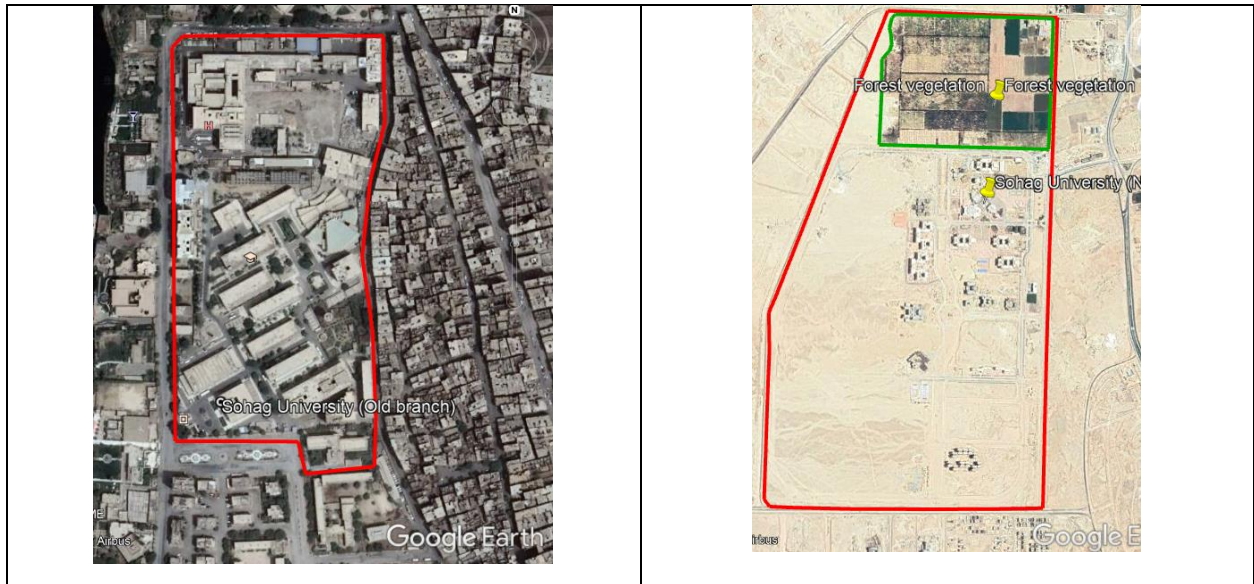
Sohag University is one of the nascent regional universities. Its general strategic goal is to cover the needs of the local, national and regional labor market, with graduates who are scientifically and practically qualified, as well as preparing a generation of distinguished scientists who are able to lead the wheel of development in all human, social, human and applied sciences.



The President of the Republic issued a decision to establish the University of Sohag in 2006, and it included the Faculties of Education, Arts, Sciences, Commerce, Medicine and Agriculture. Then the Faculties of Industrial Education and Nursing were added to the University, then in 2008 the Republican Decree was issued to establish the Faculties of Engineering and Veterinary Medicine, the number of colleges in the university became ten colleges. In 2010, to meet the needs of the Sohagi community, a decision was made to establish the Faculties of Pharmacy and Physical Education. In 2015, the faculties of Law and Foreign Languages (Alsun) were opened to meet the needs of the Sohagi community, then the College of Archaeology was established by Prime Minister Decision No. 3512 of 2015, and the study began in the academic year 2016-2017, then the College of Computers and Information was established, and recently the Council of Ministers agreed to start studies

at the College of Specific Education, thus the number of university colleges had become **17**, in addition to the Technical Nursing Institute.

The total area of the sohag university is **3610106.57** m², of which **(146529 m² buildings area and 95.94% open spaces)**.

However, sohag University began with the old campus, which is located in the city of Nasser on the eastern bank of the Nile River, with a total area of **105399.51** m², then the new campus was established with a total area of **3504707.06** m² in the western desert back of Sohag governorate with the aim of creating a new urban community around the university as the universities are considered. Indeed, the new city of Sohag arose around the university, and it is considered one of the most modern and beautiful cities in Sohag Governorate. This is a credit to Sohag university, as universities are the locomotive of development in societies.



<p>Old Campus area (105399.51 m²)</p>  <p>Total old Campus area.kmz</p>	<p>New Campus (area 3504707.06 m²)</p>  <p>Total new Campus area.kmz</p>
--	---

It is worth noting that the new campus includes a **632098.23 m²** farm containing various crops, which depend on modern methods of agriculture, and modern irrigation methods are used to rationalize water consumption.



University employees:

The number of university employees was **82,179** (according to 2021 statistics), and their statement is as follows:

- * Faculty and assisting staff **2275**
- * Employees **6396**
- * Students: **62,417**
- * Graduates **11090.**

University budget:

The total budget of the university in the year 2021 was about **987,494,075** Egyptian pounds (equivalent to \$ **50,640,722**), of which about **21.24%** was allocated to annual sustainability efforts and about \$ **5184173** for scientific research in general, of which about **33.53%** was for scientific research in the field of sustainability.

Scientific research in the field of sustainability:

The research published by Sohag University in the last three years on the Google Scholar website were about **366** researches in the field of sustainability.

https://scholar.google.com/scholar?q=%22sohag+university%22+%26+green++%26+sustainability&hl=en&as_sdt=0%2C5&as_ylo=2019&as_yhi=2021

While it has a great number of research papers published on the Scopus website covering the different fields.

<https://www.scival.com/overview/summary?uri=Institution%2F700903>

The number of locally published researches and theses related to sustainability has reached **1195**, including **705** research papers and **490** PhD and MSc dissertations.

https://www.sohag-univ.edu.eg/high_studies/

Courses related to sustainability:

Sohag University provides sustainability courses in various colleges and institutes, and this is evident from the number of these courses, which amounted to **2512**, which about **37.3%** of the total number of courses (**6734**).

<https://sust.sohag-univ.edu.eg/en/sustainability-report//>

Conferences and scientific seminars related to sustainability:

The number of these activities in the last three years reached **413**, and their details are shown in the following table:

S	Activity	Number of events related to sustainability (ED.4)
1	Conferences	31
2	Workshops	55
3	Awareness Raising	34
4	Practical Training	293
Total		413

Student Activities:

The number of student organizations related to sustainability activities has reached **17** after the end of the Corona pandemic.

Energy conservation:

The university has applied several mechanisms to work on rationalizing energy use, such as:



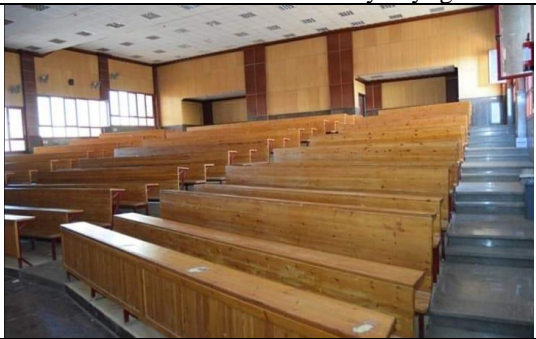

***Natural ventilation and shading from big trees:**

Many buildings at SOU meet the basic green building standard in Egypt where they have been designed and constructed for natural ventilation. Particularly, the ground and second floors in those buildings are cooled down in summer by natural ventilation. As a result, big trees around buildings provide shade for activities both on ground and second floors and outdoors.

***Full natural daylight:**

Most buildings at SOU have been designed to be naturally day lighted where sun light reaches most area of the buildings. Most of staffs' offices, labs and class rooms have been design to get much of natural sun light so that there is no need to turn on light bulbs during the day time.

Moreover, most buildings are designed in a rectangular shape facing east to west to reduce exposure to sunlight and its heat in summer, while the sun's rays come during the winter day from the south, which warms up the buildings without the need for heating devices.

	
Main conference hall full naturally daylighted.	A class room full naturally daylighted.
	
A class room full naturally daylighted.	Daylight in the campus. The image shows a landscape of the newest established location in the new SOU campus.



Buildings are designed in a rectangular shape facing east to west (sunset)



Buildings are designed in a rectangular shape facing east to west (afternoon)



Students activities under the trees shade.

Electricity consumption:

After the pandemic, in (2021) , the university worked in full capacity, as well as construction operations that had been suspended were resumed, in addition to the construction of many new buildings, which led to an increase in electricity consumption.

The university is now planning to cover the car parks with solar cells to produce clean energy to compensate the increase in consumption from traditional electricity.

The value of electricity consumption for all activities at the university in 2021 was **8,506,880** kilowatt hours, then it recorded **6,051,624** kilowatt hours in 2019, so that the average annual per capita consumption recorded **103.5177** kilowatt hours.

Renewable Energy Sources in Campus

Sohag university has started to use ecofriendly sources to produce energy, such as:

1- Building biogas generating units from organic waste (Sohag University). Sohag University has established two biogas units for generating methane. Biogas is a safe, non-toxic, colorless gas and a clean source of energy. The biogas is produced by the fermentation of any organic matter, but at our university mainly composed of animal manure from university farms

2-Using solar energy to operate hydroponic models by the Sustainability Unit (Sohag University).

3-The establishment of an electric car model using solar energy plates.

Total carbon footprint :

Calculation of carbon footprint at sohag university per year (2021)

1. Electricity :

Electricity usage: **8506880** Kilo watt hour

Carbon footprint = 7145.78 metric tons

2. Transportation (Shuttle bus):

No. Shuttle bus = 3 total trips=48 App. Travel
dist.=1.1 km

Carbon footprint = 1.27 metric tons

3. Transportation (Cars):

No. Cars = 523

App. Travel dist.=1.1 km

Carbon footprint = 55.23 metric tons

4. Transportation (Motorcycle): Its entry is forbidden

Carbon footprint = 0 metric tons

Total carbon footprint = 7202.28 metric tons

Transportation:

*The university owns **98** different cars, and an average of **425** private cars enter them daily. The university has allocated **4** parking spaces in separate places to prevent random parking, while a parking zone for motorcycles has been allocated outside the campus walls.

*There are **3** frequency transport buses operating within the university, and each bus carries out **16** trips (round trip) with a capacity of **50** passengers to serve the university employees.

*In addition, special pedestrian paths have been established in which ramps for people with special needs are taken into consideration. This is in addition to creating special paths for bicycles to encourage the spread of their use, and especially there is a plan at the university to provide numbers of them (participatory bicycles) that work by smart lock through an application on mobile phones.



*The university also, intends to purchase a number of (environmentally friendly) buses that run on electricity, to be used in the frequency transmission.

Water:

* The Nile River is the main source of the university's water, after its purification in the purification stations of the governorate.

* Several effective water saving devices are on the way to installation. Along with all the devices used on campus, they will be replaced by effective devices where, the university afforded the cost of low-flush appliances – hand washing faucet – which are installed now at the old campus. Motion sensors appliances will be installed at the New University campus.

Moreover, Sprinkler irrigation is also used for farms on campus.



* The Sustainability Unit at Sohag University has also begun to spread the culture of hydroponics in a closed cycle to encourage water rationing.



* In the field of water recycling, the university is connected to the public sewage network in the governorate, where the governorate's water and wastewater company recycles 100% of water and uses it to irrigate tree forests in desert areas.



Waste management:

The university encourages all its employees to separate the waste and provides the necessary containers for this purpose in preparation for recycling and benefiting from it. The university also provides various means for collecting and disposing of hazardous waste such as the waste of university hospitals, as there is a special unit in Sohag University Hospital for the treatment of medical waste, and it deals with liquid and solid wastes that are collected from all laboratories, research units and clinical departments managed by the technical team of waste. They are responsible for operating a fully automated medical waste treatment system at Sohag University Hospital. In addition, the university participates in a partnership contract with the Sohag Governorate Health Directorate in the campus of medical incinerators in Al Kawthar.

*On the campus of Sohag University, there are some places that produce organic waste such as cafeterias and central restaurants, in addition to the fallen leaves from the green spaces. Plus pruning horticulture. Sohag University manages organic waste through an annual renewable contract with Hi-Kit Company. (<http://highkit.net/>)

*Moreover, the university has initiated an agreement with Green Flat company for farm supplies and equipment to convert the university's organic waste into bio-organic fertilizer using earthworms via Vermicomposting. As shown in the sample pictures provided by the company. <https://greenflateg.com/>



Example of collection of horticulture trimming, Sohag University, Sohag, Egypt.



Example of converting organic waste into organic fertilizer (Green flat company), Sohag University, Egypt.